

Mungo references demonstrate top performance

Well equipped for the future

Israel, Nof HaCarmel Hotel Haifa Ltd

Application

Facade application, securing facade tiles with mechanical fixing

Fastening material

MQL-STr 10x120

Key to success

Specified product

Meeting technical requirements

Competitive price



Switzerland, railway viaduct natural stone, Gümmenen

Project

Renovation and expansion on double track

Application

Fastening in natural stone, setting depth 1200

Fastening material

MIT-Rock (1 palette) MNA (5'000 pcs.) MEN (5'000 pcs.) SDS-Max 20x1500 (20 pcs.)

Special requirements

Natural stone, rock

Key to success

Specification by engineer. Mungo convinces with a good customer contact and competent advice and service from the sales representative.



2020

Switzerland, Renovation motorway bridge N6 Steffisburg

Application

Renovation motorway bridge

Fastening material

Rebar installation

Requirements

MIT-Hybrid/MIT-COOL 400 ml (2'000 pcs.) / MCS-S 6/40 (5'000 pcs.)

Key to success

ETA approval Option 1

Mungo convinces with a good price-performance ratio and competent advice and service from the sales representative.



Switzerland, Renovation Allmend Tunnel, motorway A6 Thun

Application

Rebar installation

Fastening material

MIT-Hybrid 400ml (6'000 pcs.) / MIT-Hybrid 825ml (1'200 pcs.)

Requirements

Side wall: requirements of engineer 3.3kN, pull out test 51kN

Ceiling: 5 tests with cleaning acc. ETA -> 70kN -> no failure

Ceiling: 5 tests without cleaning -> 70kN -> no failure

Key to success

The site manager was open to a new product, was impressed by the good price-performance ratio and the competent and serious advice from the Mungo sales representative and the technical department.



Switzerland, new terminal V-Cableway Grindelwald

Application

Fastening material

Requirements

Key to success

Indoor applications, ceiling system, stairs and handrails

MRS, MEA, m2r-l, MIT-Hybrid, MIT-Sr, m1t

High-quality, snow and weather proof products

Calculation for suspended ceiling of 2.5 tons

Sales Rep knew about this project and contacted customer active and in time. Due to the good customer contact and expert advice including calculations from our engineer, Mungo was able to supply various products from the whole Mungo product range for this project.



Switzerland, A14 Freeway Access Gisikon, chance on project in 2020

Project	Redesign and rebuilding of Freeway Access
Product	Anchor rods, MIT-Rock, MIT-Hybrid Plus, MIT600RE
Follow-up business	Hollow Drill Bit, Drill Bit, Concrete Screw
Status	On 29th October 2019 architects agreed to use Mungo products in this project. Mungo puts competitor Hilti and others out of the project.
Start of construction	First half of 2020



Egypt, Iconic Tower, biggest tower in Africa

Application

Rebar Fixing

Fastening material

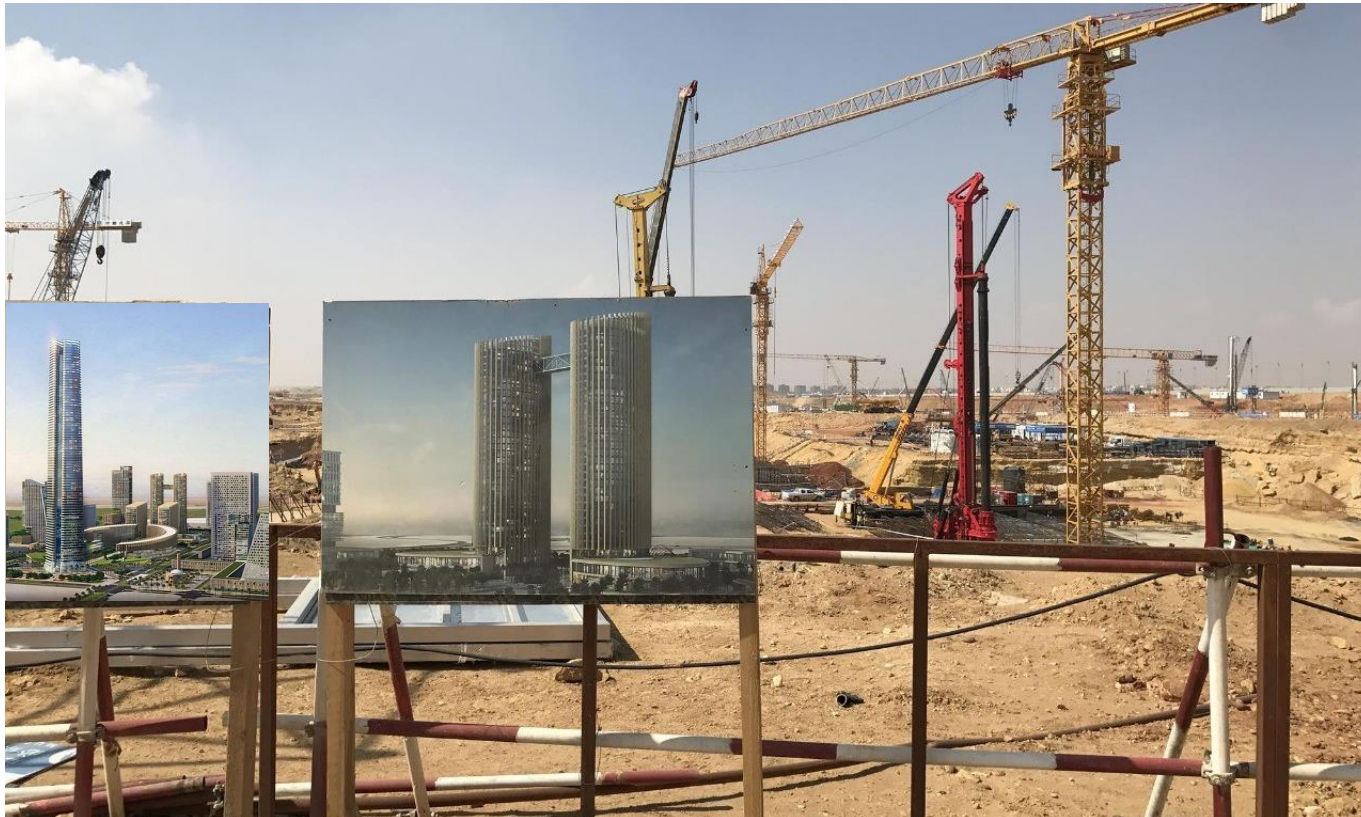
MIT600RE

Requirements

Premium product & technical support

Key to success

Our partner Power Trade has arranged a very complicated test method by their engineers and proved how strong is our chemical (rebar $\varnothing 32$ splitted). With the combined support from Mungo and Power Trade we get the approval.



Ukraine, several façade projects in 2019

Application

Façade installation

Fastening material

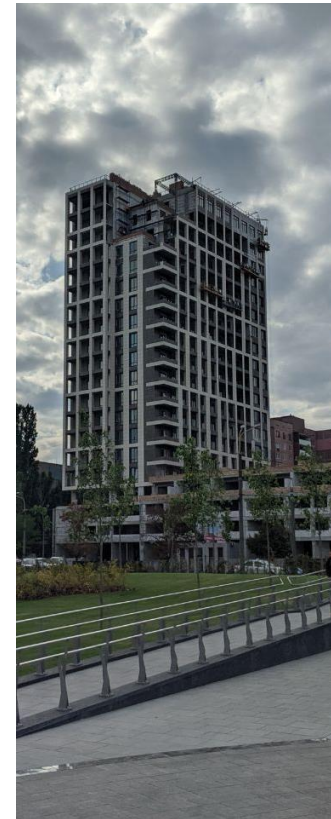
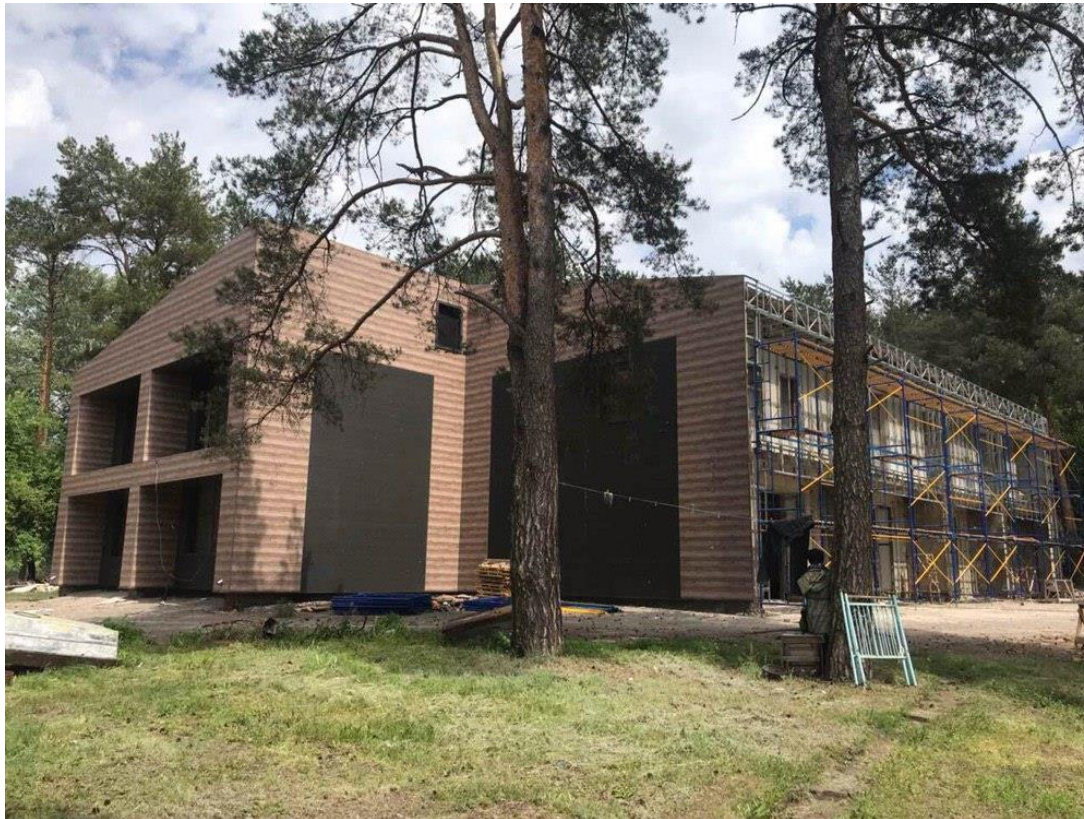
MQLK-STB

Requirements

High quality level

Key to success

Mungo is specified in their façade system



Lithuania, Hilton Hotel in old town of Vilnius

Application

Rebar Installation

Fastening material

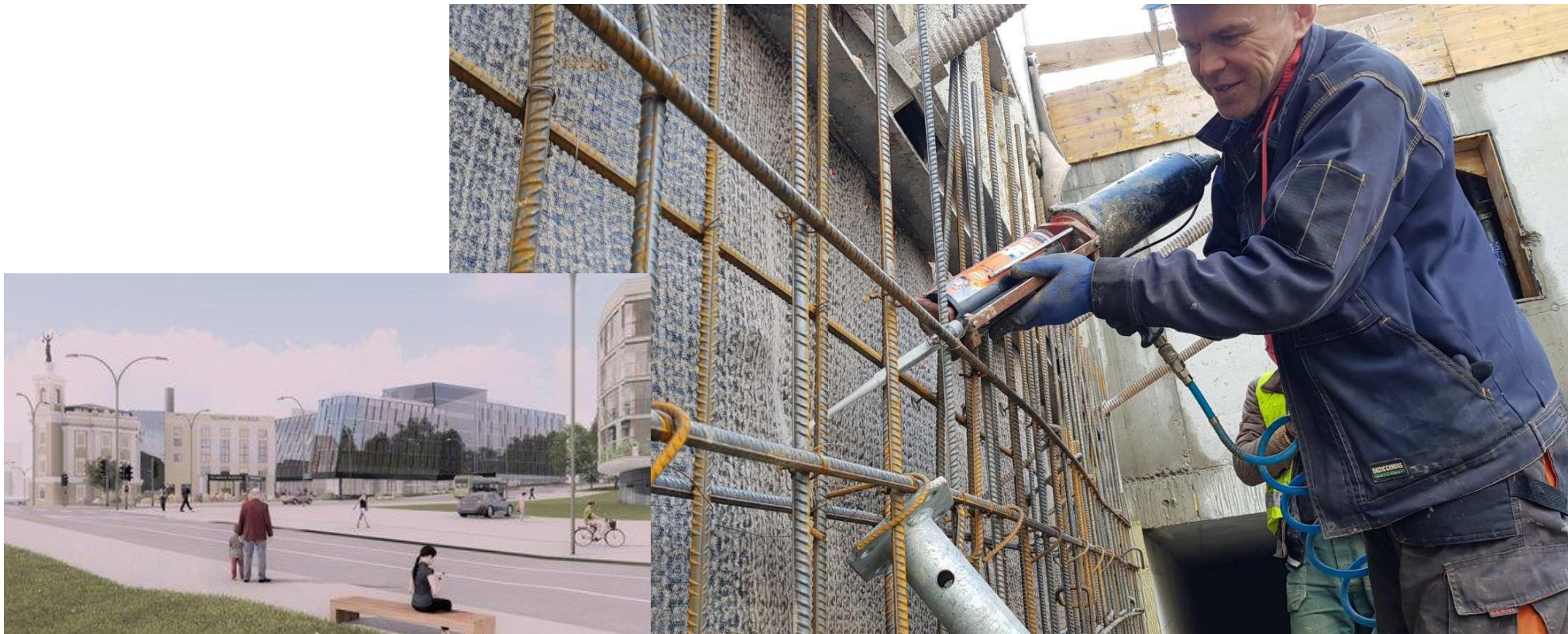
MIT-Hybrid 825ml

Requirements

Price and Support

Key to success

Although a competitor of us was specified for this project we won because of better value proposition and better support



Denmark, Lillebæltsbro Bridge

Application

66'000 holes for rebar 12mm

Fastening material

MIT-SE Plus 400ml

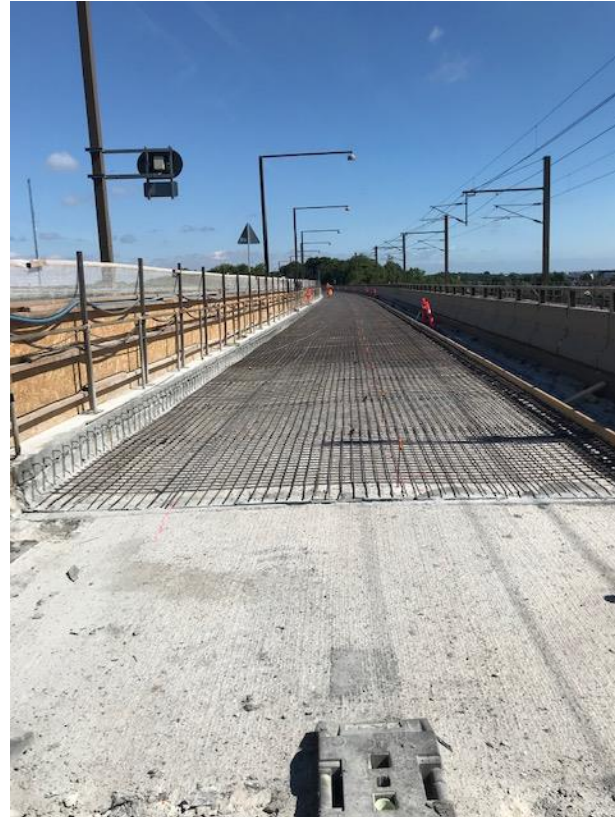
Requirements

Premium product and technical support

Key to success

Our partner Mefanordic has own engineer to support with specifications and a technical sale guy, who was leading the sale with technical back up and pull out tests.

Mungo made competitive offer and were fast with all their inquiries.



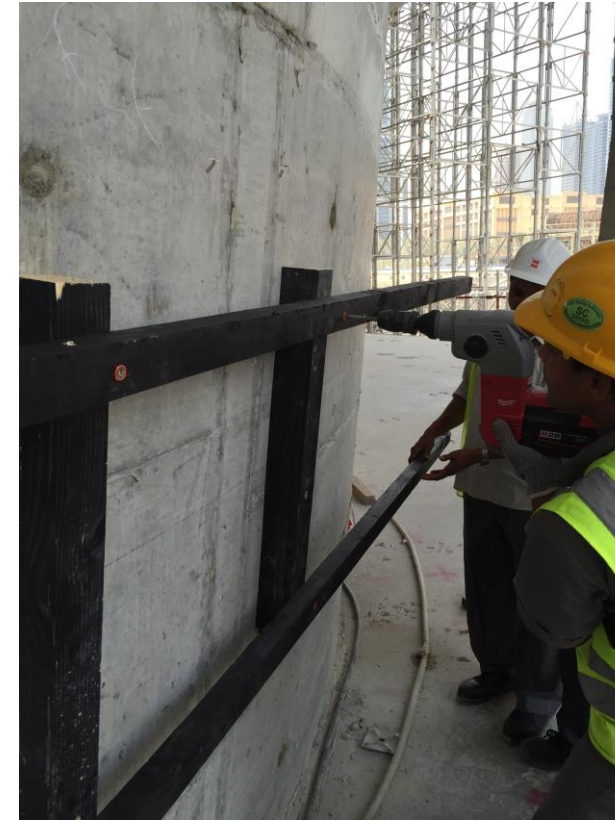
Dubai Opera House

Construction description

Scaffold fixing

Fastening material

ESA, MIT



Blue Water, Dubai

Construction description

Fastening material

Scaffold fixing

MIT600-RE, MQL



Renovation retaining wall with guard rails – MIT-VE, MIT-Sr

Application

Base plate

Fastening material

MIT-VE 825ml, MIT-Sr A4-70 with 2 hex-nut and washer DIN 9021



Damac Hights, Dubai

Construction description

Scaffold fixing

Fastening material

MIT600-RE



Restoration hospital Aarau - MIT-SE Plus, MIT-Sr

Application

Consoles

Fastening material

MIT-SE Plus, MIT-Sr A4



Noise protection wall Einsiedeln - MIT-COOL, MIT-Sr

Application

Noise protection wall

Fastening material

MIT-COOL, MIT-Sr A4



Football pitch SV Kaufdorf, LED Lighting – MVA, MIT600RE 1

Application

First time in Switzerland!

Fastening material

Fastening of 16m high lighting mast LED

Requirements

MVA M24, MVA-Sr A4 M24x330, MIT600RE

Statics



2016

Football pitch SV Kaufdorf, LED Lighting - MVA, MIT600RE

2

Application

First time in Switzerland!

Fastening material

Fastening of 16m high lighting mast LED

Requirements

MVA M24, MVA-Sr A4 M24x330, MIT600RE

Statics



2016

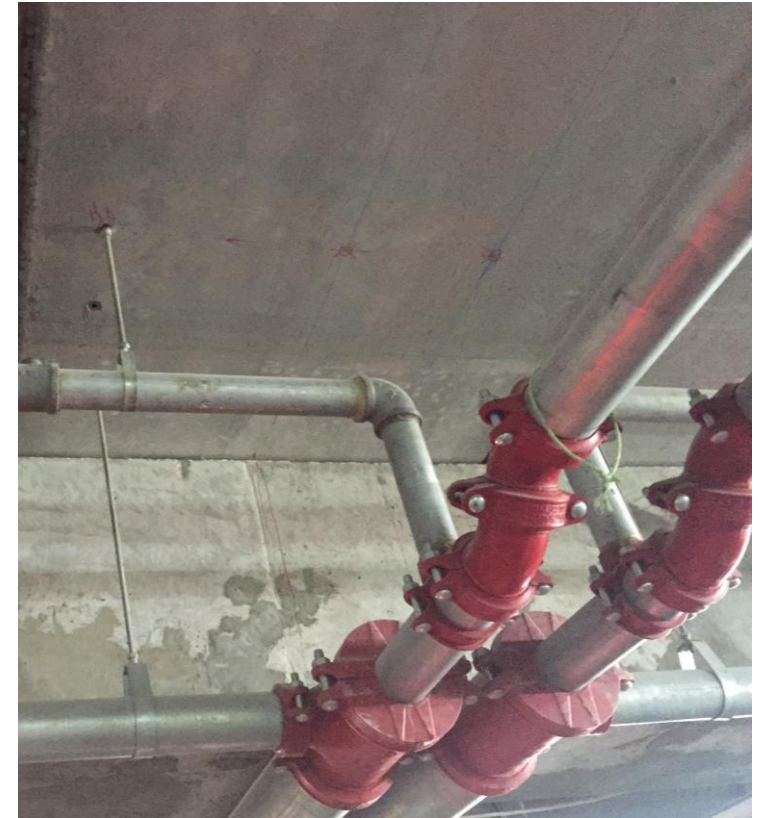
The Ponte – Palm Jumierah, Dubai

Construction description

Scaffold fixing

Fastening material

MIT-SE PLUS, MIT-600-RE, MHDA, ESA, m2r



ARGE Napoleon, Simplon Pass - MIT-SE Plus/Drill bits/m2r

1

Description

Restoration of rebar connections

Application

Post installed rebar connections

Fastening material

MIT-SE Plus 400ml, jet-trac triplo, SDS-Max Drill bits, m2r Throughbolt, threaded rods A4

Requirements

Quality & Approvals



ARGE Napoleon, Simplon Pass - MIT-SE Plus/Drill bits/m2r

2

Description

Restoration of rebar connections

Application

Post installed rebar connections

Fastening material

MIT-SE Plus 400ml, jet-trac triplo, SDS-Max Drill bits, m2r Throughbolt, threaded rods A4

Requirements

Quality & Approvals



Apartment complex, Münsingen - m2r/MIT-Sr/MIT-SE Plus/MQL

Description

Installation of wooden facade

Application

Fixing of brackets

Fastening material

m2r, MIT-Sr, MIT-SE Plus, jet-trac triplo drill bits, MQL

Requirements

Quality & Approvals



New construction school building - SDS-Max/MIT-SE Plus/MIT-ESH 1

Description	New construction of school building and gym
Application	Single-face formwork
Fastening material	SDS-Max drill bits, MIT-SE Plus, MIT-ESH
Requirements	High quality products



New construction school building - SDS-Max/MIT-SE Plus/MIT-ESH 2

Description	New construction of school building and gym
Application	Single-face formwork
Fastening material	SDS-Max drill bits, MIT-SE Plus, MIT-ESH
Requirements	High quality products



Elevator to a platform - MIT-SE Plus/MIT-Sr

Description

Application

Fastening material

Requirements

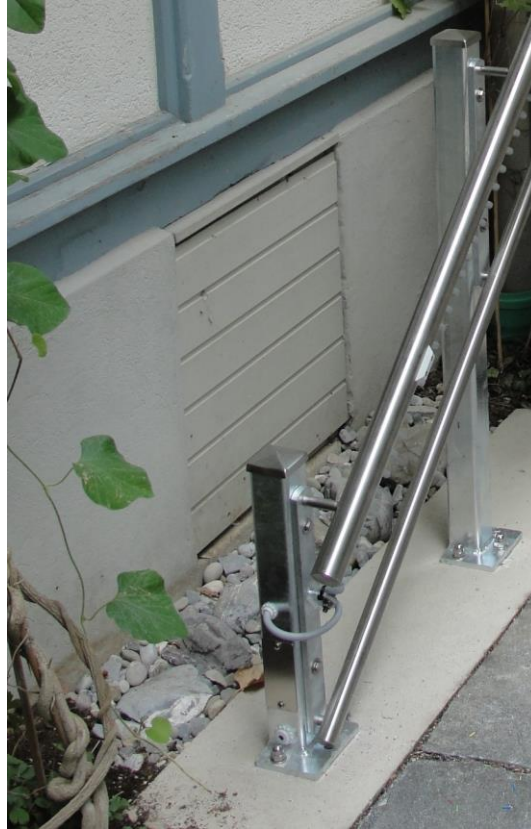
Elevator to a platform of a family home

Anchorage of bars

MIT-SE Plus 400ml, MIT-Sr M12x130

High standard of corrosion protection, due to heavy weather conditions.

High requirements on loads (bending moment) and vibrations.



Basilica CZ Brno – MGD, MGV

Description

A reconstruction of the brickwork

Application

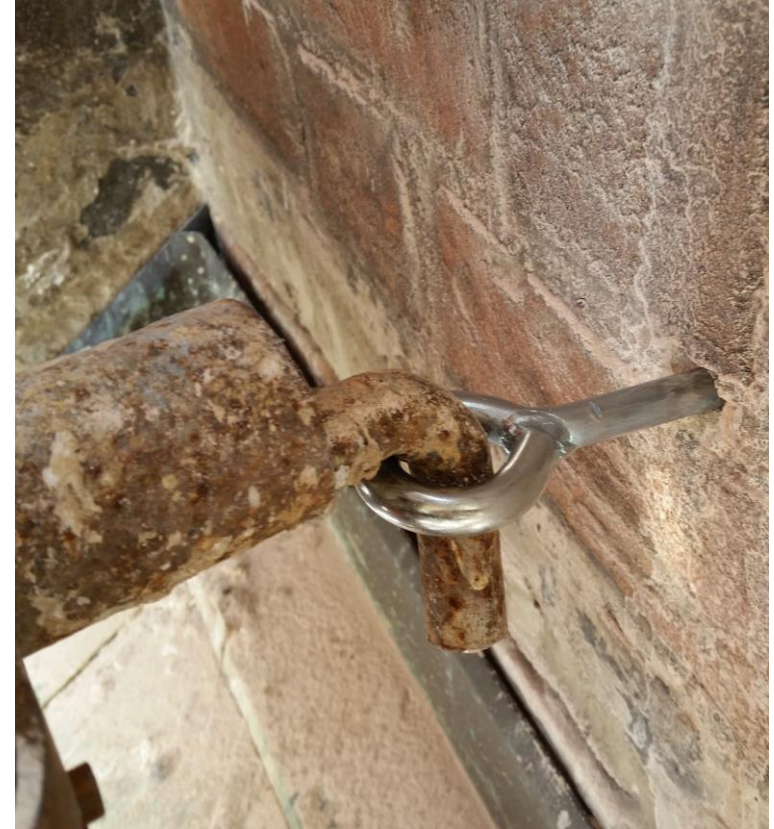
Scaffold

Fastening material

MGD 14x70, 14x100, 14x140, MGV (different lengths)

Requirements

Because it is a historic masonry and clefts have been extensively weathered, it was necessary to make tensile tests. Requirement: 4 kN



Basilica CZ Brno – MIT-SPE, MIT-S

Description

A reconstruction of the brickwork

Application

Scaffold

Fastening material

MIT-SPE 400 ml, MIT-S M20x300

Requirements

Because it is a historic masonry and clefts have been extensively weathered, it was necessary to make tensile tests. Requirement: 20 kN



Bridge-refurbishment, Geneva - MIT-SE Plus

Description

Pull out tests, tension and shear load

Fastening material

MIT-SE Plus



Project in Czech Republic, Prague – MQLK-STB

Construction description

Business Park project

Fastening material

MQLK-STB 10x120

Quantity

20'000 pcs.



Project in Tel Aviv - MQL

Construction description
Fastening material

Strengthening stones project
MQL-STr 10x100



Schenkon - m2-C, MIS, MEN, MIT-SE Plus, MIT-Sr

1

Description

Special Façade with elements of natural stone

Application

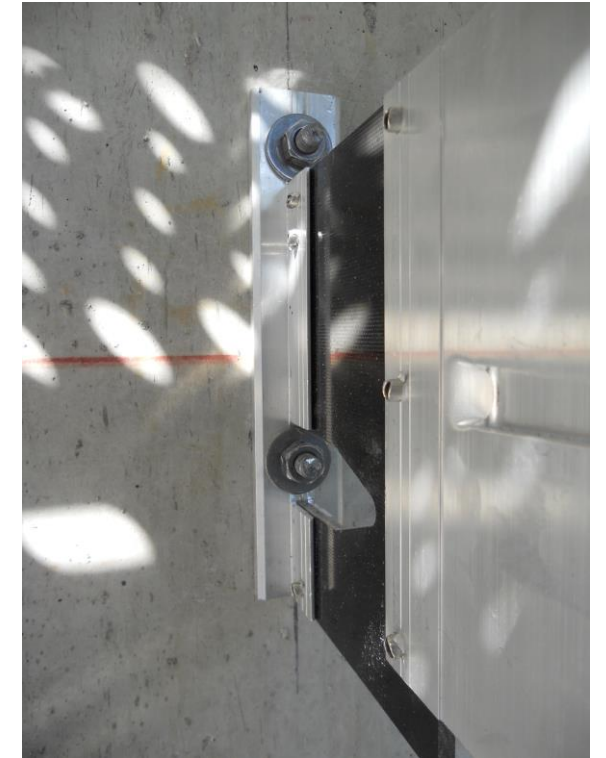
Façade

Fastening material

m2-C, MIS, MEN, MDB-M, MIT-SE Plus, MIT-Sr

Requirements

All necessary products for this application in range



Schenkon - m2-C, MIS, MEN, MIT-SE Plus, MIT-Sr

2

Description

Special Façade with elements of natural stone

Application

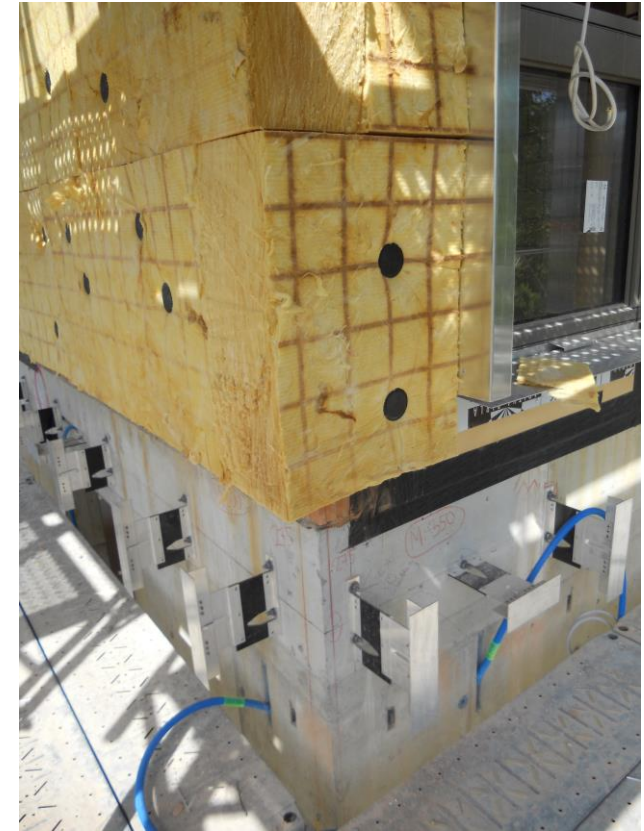
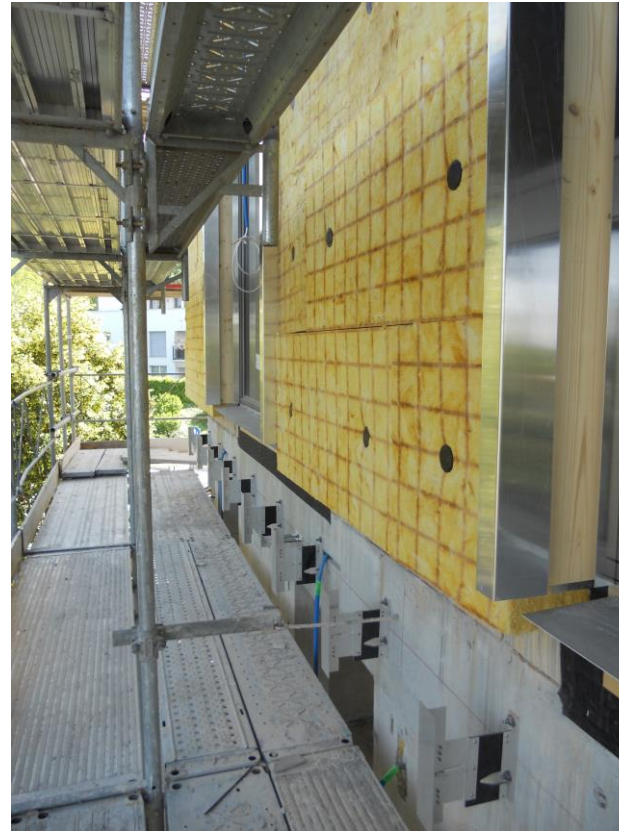
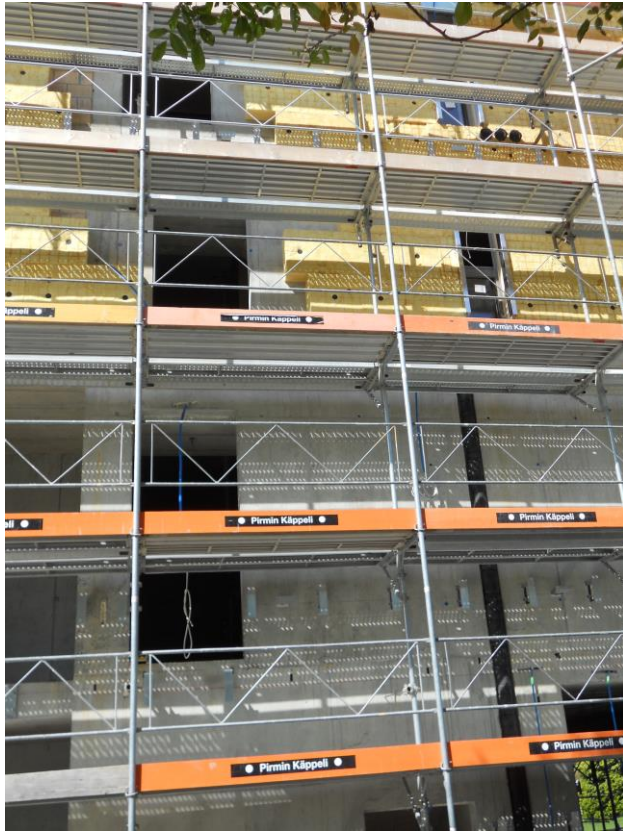
Façade

Fastening material

m2-C, MIS, MEN, MDB-M, MIT-SE Plus, MIT-Sr

Requirements

All necessary products for this application in range



Schenkon - m2-C, MIS, MEN, MIT-SE Plus, MIT-Sr

3

Description

Special Façade with elements of natural stone

Application

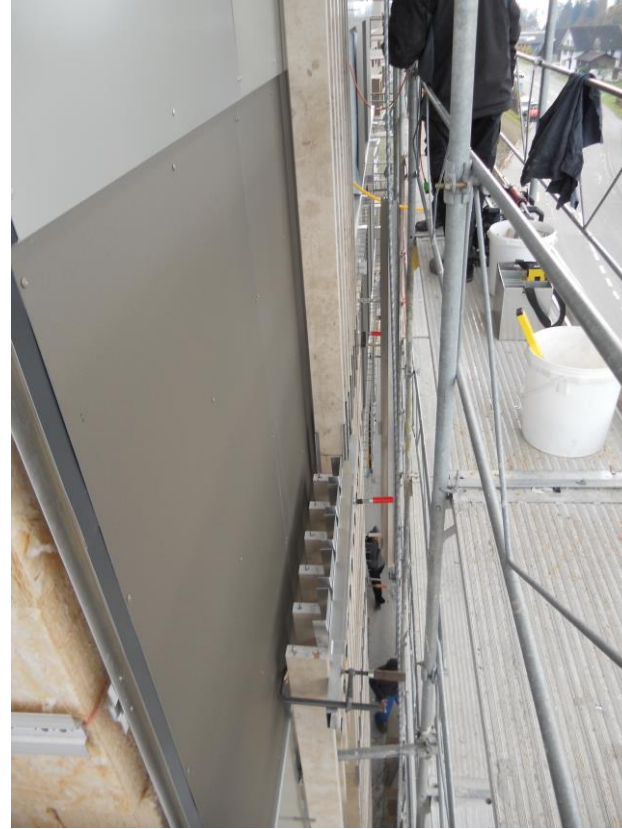
Façade

Fastening material

m2-C, MIS, MEN, MDB-M, MIT-SE Plus, MIT-Sr

Requirements

All necessary products for this application in range



Schenkon - m2-C, MIS, MEN, MIT-SE Plus, MIT-Sr

4

Description

Special Façade with elements of natural stone

Application

Façade

Fastening material

m2-C, MIS, MEN, MDB-M, MIT-SE Plus, MIT-Sr

Requirements

All necessary products for this application in range



Swissmill – The new grain silo

Customer

Swissmill

Application

Rebar connections

Fastening material

MIT-SE Plus / MIT-COOL / SDS-MAX

Requirements

Fast curing times at low temperatures

City of Zurich



Dam - Barrier Lake Albigna, Switzerland (Bregaglia Valley)

Building site

Safety scaffold, Barrier Lake Albigna

Application

Fixing of base plates and consoles

Fastening material

m2 Throughbolts M8x85, M12x125 and HL-S Heavy Duty Anchor 24/20

Requirements

Our products HL-S Heavy Duty Anchor and m2 Throughbolts have to withstand the forces of snow load, squall, wind and ensure safe working



Nakheel Mall, Dubai

Construction description

Scaffold fixing

Fastening material

MIT-SE PLUS, MHDA



Al Habtoor City (W Hotel, Westin Hotel, St Regis Hotel), Dubai

Construction description

Scaffold fixing

Fastening material

MIT-SP, ESA, m2r



Hotel renovation in Gniezno, Poland – MQLK-STB / MIDS

Construction description
Fastening material

Ventilated façade
MQLK-STB 10x80 for substructures
MIDS 200 and MDB 80 for mineral cotton insulation



Console fixing – Concrete Screw MCS-A-S

Customer

Jego AG

Applications

Reveals, sills, lintels, roof edge elements -> Direct fixing in concrete with MCS-A-S Concrete Screw

Construction management

Richard Iten (Gerber & Gadola Fassaden AG)

Fastening material

MCS-A-S Concrete Screw (8'000 – 10'000 pcs)

Requirement

Small edge distances



2015

Viceroy Hotel-Palm Jumierah, Dubai

Construction description

Scaffold fixing

Fastening material

MIT-600 Rem ESA, m2r, MQ, MAN, MQL



Private Home, Czech Republic – MB-ST

Construction description
Fastening material

Facade
MB-ST Nylon Frame Plug with screw T30, 8x80



ARGE Oerlikon 2013 - m2

Customer

SBB

Construction description

Diaphragm Wall Fixings

Fastening material

m2 Throughbolts M10 x 160



AZ Tower, Brno, Czech Republic

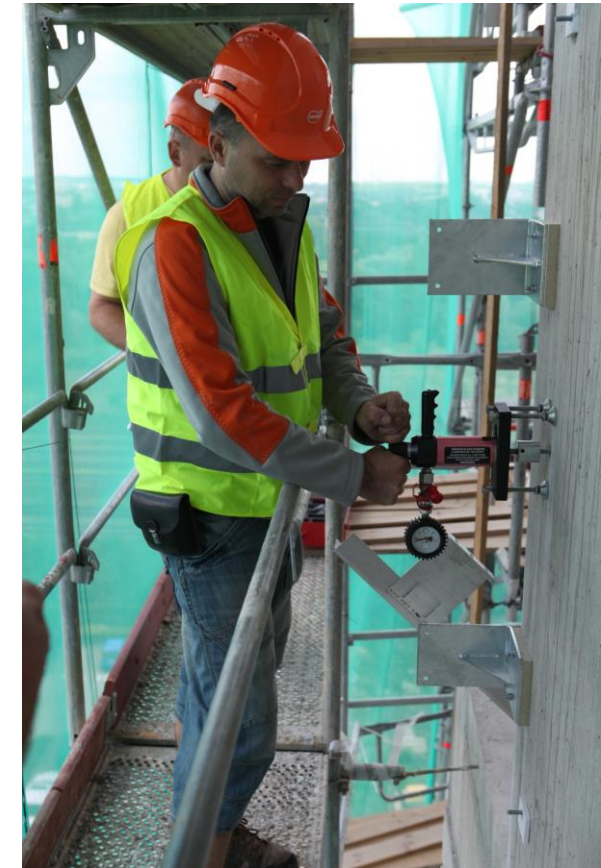
Construction description

AZ Tower is a skyscraper under construction. After completion AZ Tower will be the highest building in CZ with 111 metres in height and 30 floors. Ceramic facade m2 Throughbolt M12x125 and M12x145 - total quantity 20'000 pcs.

Fastening material

Pull-out tests have been made in 20 floors, the load requirement was 4.5kN/anchor, pull-out test results: 16kN-20kN on average!

Requirements



Cross-City Link Altstetten – Zurich Main Station – Oerlikon m1tr

Construction description
Fastening material

Steel constructions, cable trays (special fire approval MPA Institute)
m1tr M16 x 180/60, A4 with washer DIN9021 (15'000 pcs)
m1tr M16 x 150/30, A4 with washer DIN9021 (3'500 pcs)



Dubai - Al Ashram tower

Construction description
Fastening material

Fixing of internal climbing tower crane
MIT-SE 400ml & MIT-S 30mm



Renovation retaining wall

Customer: Town Altensteig, Germany
Construction description: Renovation retaining wall
Fastening material: MIT-SE Plus 350 ml

MIT-SE Plus



Renovation retaining wall

Customer: Town Altensteig, Germany
Construction description: Rebar fixing
Fastening material: MIT-SE Plus 350 ml

MIT-SE Plus



Renovation retaining wall, road

Customer Town Altensteig, Germany
Construction description Rebar fixing
Fastening material MIT-SE Plus 350 ml

MIT-SE Plus



Office building in Prague - m3

Application

Fixing of Niro-bar for rear ventilated marble facade

Fixing element

m3 10x130

Reason of choice

Dacromet coating

Sold quantity

20'100 pieces



2010

Factory for industrial cranes and machines, Grigorewo (Sofia)

Building site

Factory for industrial cranes and machines – Grigorewo, area Sofia, Bulgaria – building area 8' m²

Main responsibility

Company Cordeel, Bulgaria, www.cordeel.be

Responsibility for

reinforced concrete structures

Company Europrefabicate, Bulgaria, www.europrefab.com

Application

Fixing of precast concrete to concrete

Fastening material

m² Throughbolt 12x125 and 16x145, total quantity 1'200 pcs sold by Proconsultengineering Ltd



Opera House Ljubljana, Slovenia, adaption of old and new building

Application

Anchoring of base plates of stage elevator

Fastening material

MIT-SE and threaded rod M 16mm and 20mm



Railway Station Aarau

Construction description

Scaffold fixing

Fastening material

MGV+MGD



Amazon House, Czech Republic - m3

Construction description
Fastening material

Facade
m3 Throughbolt 10x130 (16'000 pcs)
m3 Throughbolt 10x90 (2'000 pcs)



Sun City mall / Cairo Egypt

Construction description
Fastening material

Shopping mall with cinema complex
MIT-SE for fixing steel structure with MIT-S for cinema complexes
ESA for MEP fixings



Al Falasi Commercial Building – Abu Dhabi

Main contractor: Amana contracting company / Cladding contractor: White Aluminum

Fastening material

MDS Insulation Fixing pin for fixing 50mm thick rock wool panels / m2r 8x80 for fixing for cladding runners onto concrete slabs / m2r 10x95 for fixing curtain wall angles onto concrete beams and slabs / MBR-STr 10x100 for fixing cladding runners onto block work / MIT-SE + MVA-Sr for fixing steel pole at the top of the building onto a concrete corbel



Al Falasi Commercial Building – Abu Dhabi



Ostrava Mitall, Czech Republic - MB-SS

Construction description
Fastening material

Ceramic facade
MB-SS Nylon Frame Plug with hexagon screw 10x100



Dubai - Allmac electro mechanical

Construction description
Fastening material

HVAC – Heat, ventilation and fire fighting
ESA & MHDA



Dubai – Meydan project

Construction description
Fastening material

Fixing of machines, fire pipes, steel plates fixing for MEP applications
m2r, ESA, MIT-SE 400 ml



2010

Investstroygarant, Moscow

Construction description

Building Construction complex (7 buildings)

Glass facade

Fastening material

Concrete m2 10/95

Concrete MBRK-STB 10/80

Aerated concrete MBK-STB 10/120



Lotte Plaza Hotel, Moscow

Construction description
Fastening material

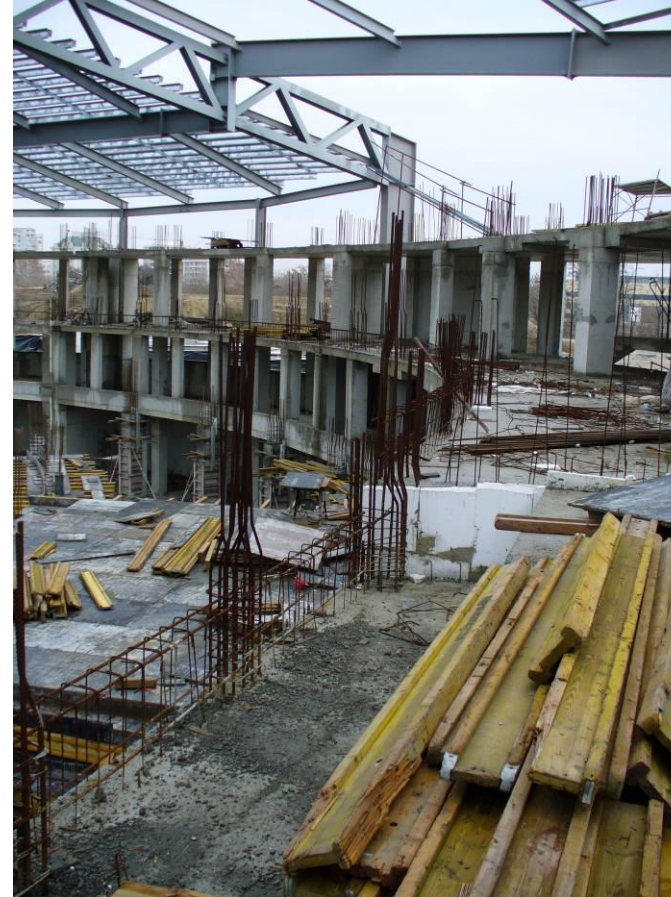
Glass facade
Concrete, m2 10/125



Multi-purpose hall in Plovdiv, BG - MIT-SE + rebar

Construction management
Construction description
Fastening material

Pons Holding Burgas, Bulgaria
Rebars with MIT-SE in multi-purpose hall in Plovdiv, BG with 14'000 seats
MIT-SE 400 ml and rebar



Moscow - business centre, Russia

Construction description
Fastening material

Scaffold fixing
MGV+MGD



Skating rink construction with man made ice, Russia

Construction description
Fastening material

Steel column construction
MIT COOL, threaded rod M24, M36



ARGE Glatt Air - MIT-SE/MEN/MPU

Customer

VBG Verkehrsbetriebe Glattal

Construction description

New development Glatt bridge, Centring and bridge over Glatt

Fastening material

Boarding of the centring basement as well as the driftwood bumper with MEN 70 + 90. Starter bars with MIT-SE. Misc. formwork sealants with MPU-P50.



Airport Berlin-Schönefeld - MIT-SE 400

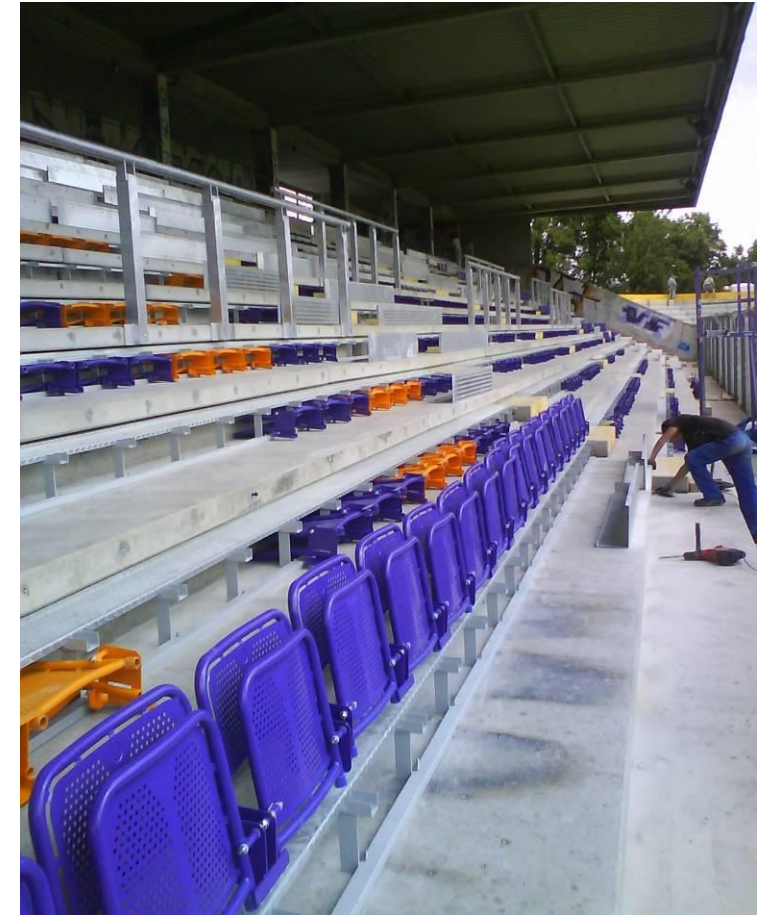
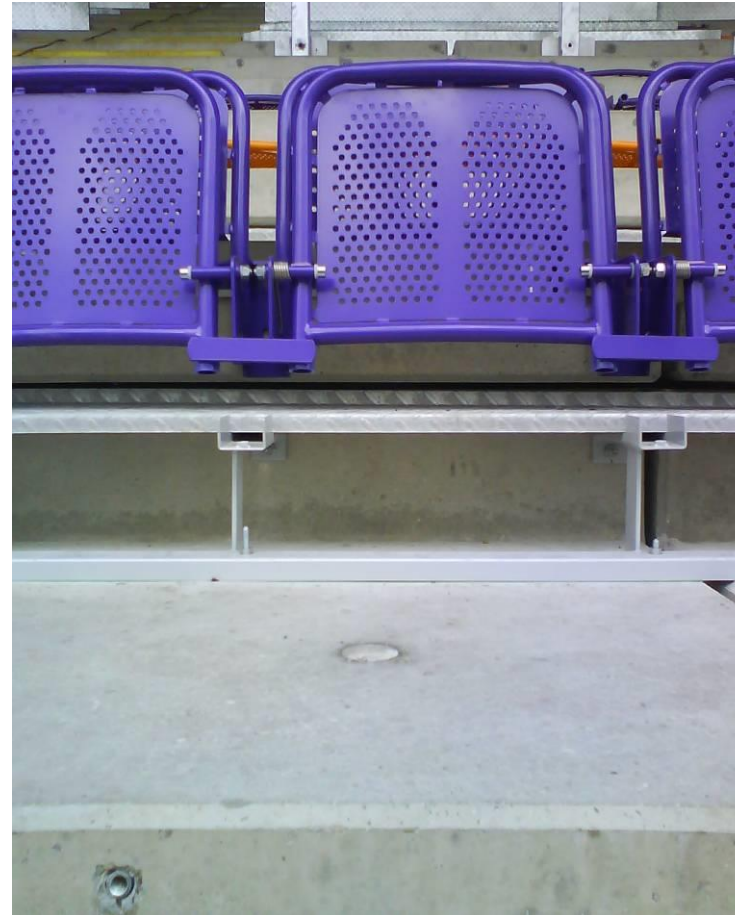
Customer Firma Otto Alte-Teigeler in Kuchelmiss
Construction management Gerd Steinberg
Construction description Runway extension
Bond of concrete pieces by rebar
Fastening material MIT-SE 825ml styrene free epoxy-acrylate mortar



Football stadium Vienna - m2/MIT-SE/MIGH

Construction description
Fastening material

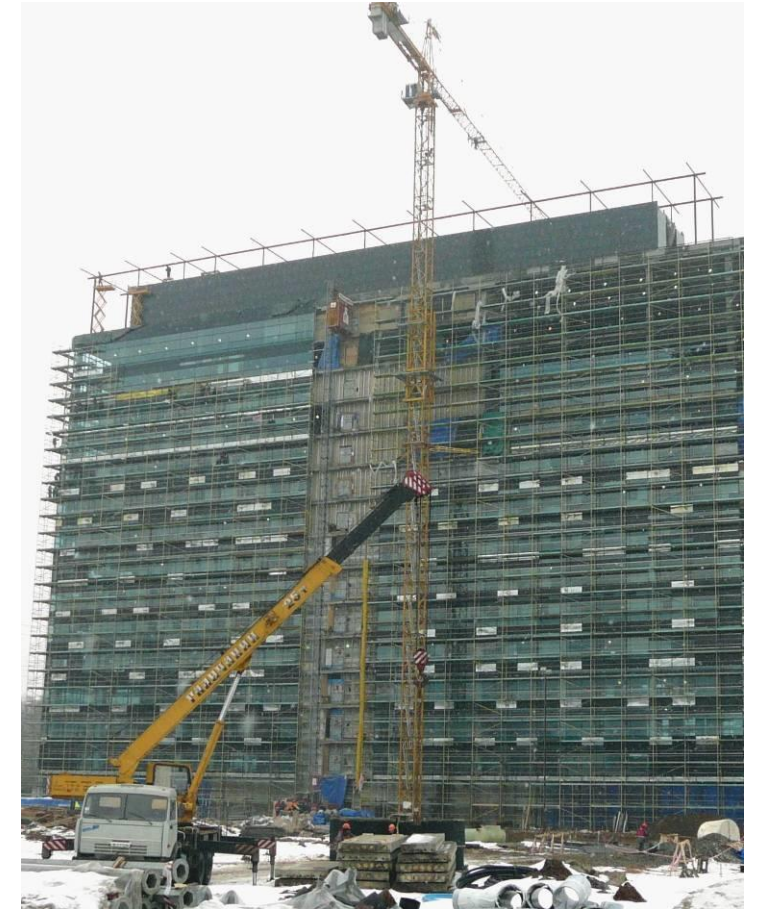
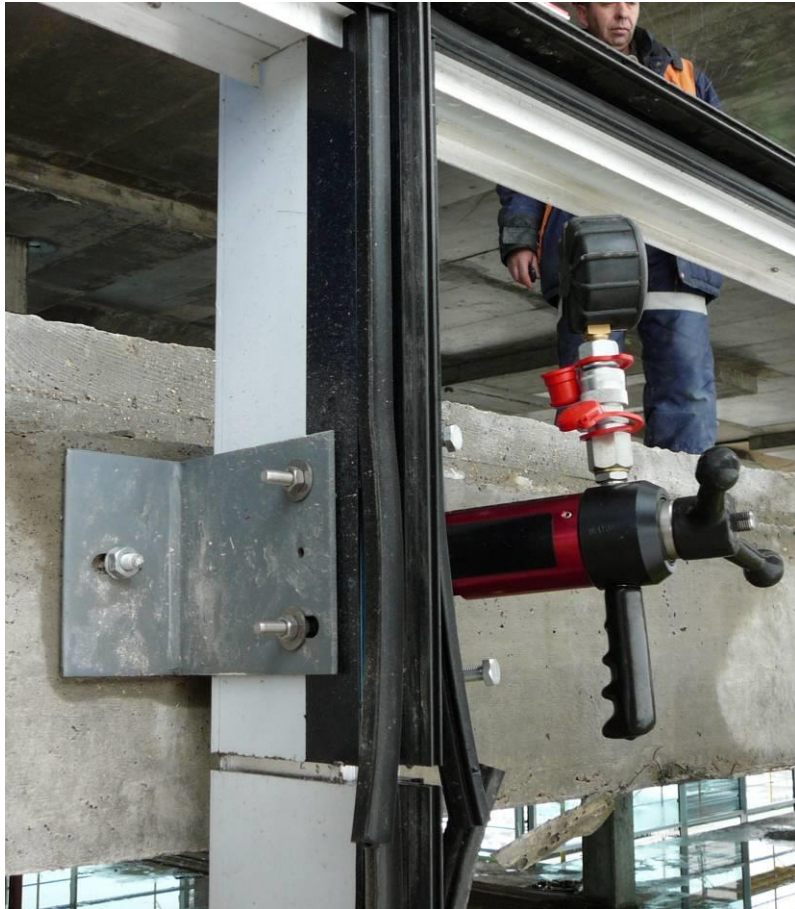
Seat fixing
m2 10x125, MIT-SE400 and MIGH M10



IKEA business park, Moscow

Construction description
Fastening material

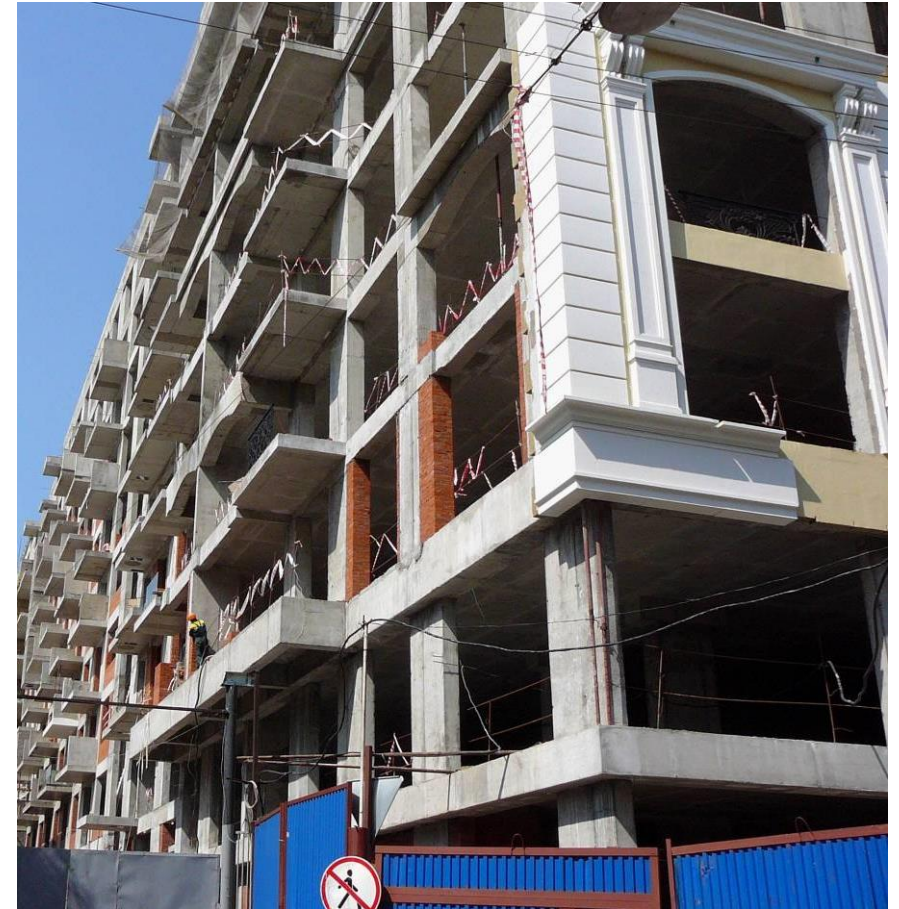
Glass facade
Concrete, m2 10/95



Evrookno Engineering, Moscow

Construction description
Fastening material

Building Construction. Schuco glass window construction
Concrete - m2 10/125, concrete MBR-SS 10/100



Monolit, Moscow

Construction description

Building construction

Glass facade

Fastening material

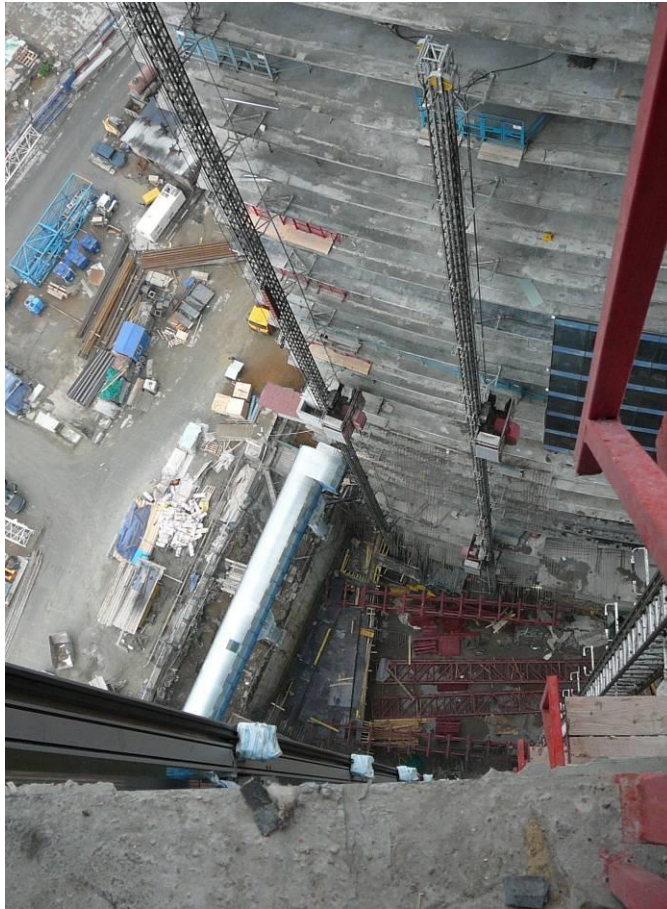
Concrete m2 10/95, solid brick MBRK-STB 10/100



Moscow City, multifunctional administrative building, Russia

Construction description
Fastening material

Glass facade
Concrete, MIT-E, MIT-G



Barkly Grand, Moscow

Construction description

Building construction with the underground parking

Fastening material

Facade

Concrete, MIT-E, MIT-S 16x200



Krasnogorsk business centre, Moscow

Construction description
Fastening material

Facade
Concrete MBK-STB and aerated concrete



Trade and office building, Moscow

Construction description

Construction with underground parking,

Ventilated facade

Fastening material

Concrete, MBRK-STB 10/100



Chelyabinsk City, Russia

Construction description

Building Construction "Svyatogor"

Elevator fixing

Fastening material

MIT-E, threaded rod M20



2007

Arge TSH Gallery A2 - MIT-SE 400

Customer

Canton Basel-Landschaft

Construction management

Construction and ecology directorate underground work

Construction manager

Jung Michael

Site supervisor

Silvio Bernasconi, Construction volume 25 Mio.

Fastening material

MIT-SE 400 styrene free epoxy-acrylate mortar



High bay warehouse in Mexico - MVA-P/MVA-S

Statics

Engineering office G. Trinker, DE-57223 Kreuztal

Steel construction

SSI Schäfer, D-57289 Neunkirchen

Construction description

Roof and wall bearing steel construction with 12 alleys

Misc.

The warehouse is in a seismic area of Mexico and is one of the biggest realised high bay warehouses in Middle and South America.

Fastening material

MVA-P Resin anchor and anchor rods \varnothing 20/24/30



2005

Climbing wall - m2

Object

Customer

Construction management

Fastening material

Climbing wall school building Läuelfingen

Erne AG Läuelfingen woodwork/carpentry

Township Läuelfingen

m2r-l with internal thread, A4, M10



2005

General plant Wettingen - MIT-E 825

Customer

Arge generating plant Wettingen

Construction description

Drill hole depth 1200mm / drill hole diameter 45mm / rebar diameter 34mm

Fastening material

MIT-E 825 Mungo injection technology epoxy-acrylate



Gottesackerstrasse 1 - 5, Pratteln - MVA

Customer

Wahl und Krummenacher AG

Construction description

Floor fixing with resin capsule M16, 4 pieces per bearing

Wall fixing with MIT M12

Construction management

Mrs. Bossy, MuttENZ, architecture

Fastening material

Resin capsule M16 and MIT M12



Barn Niederbüren - MVA-E

Customer	Hans Müller AG, Oberbüren
Construction description	Construction barn and machine hall Steel construction
Construction management	Hans Müller AG, Oberbüren
Fastening material	MVA-E M16



Sazka Arena Prague - MIT-E 380

Customer

Sazka a.s.

Construction description

Seat fixing

General enterprise

Skanska CZ a.s.

Fastening material

MIT-E 380 Mungo injection technology epoxy-acrylate



2004

Kläymatte, Zollikofen - MIT-EA 380ml

Customer

Builder Kläymatte, Bernische Lehrerversicherungskasse

Construction description

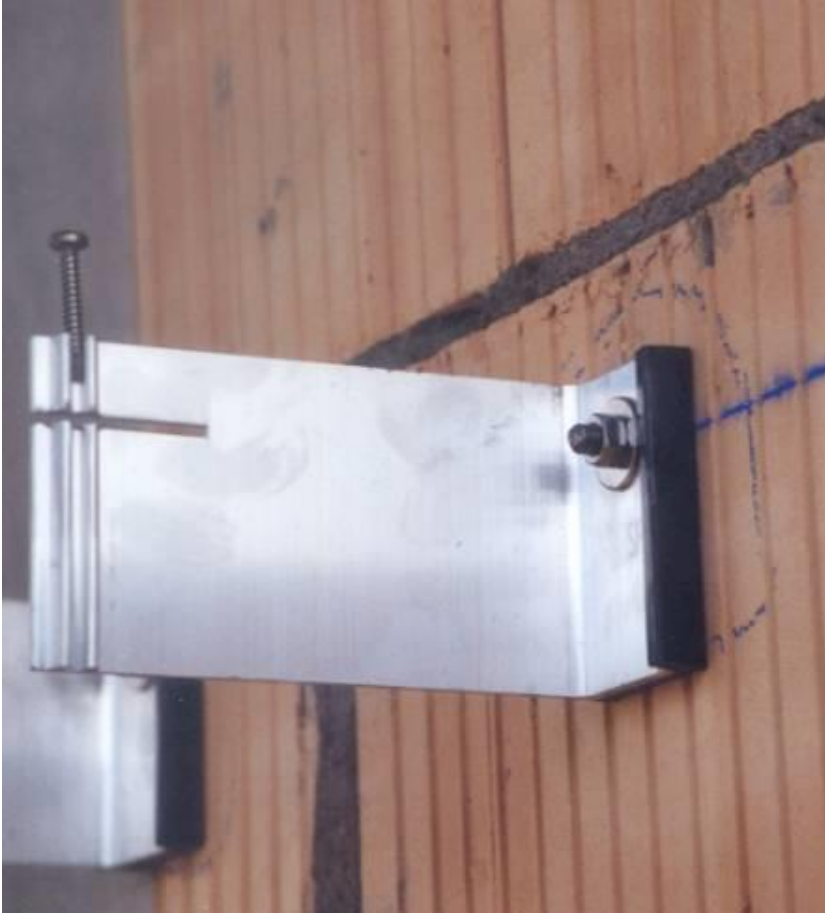
Non-bearing facade

Construction management

Ramseier Bern, facade building AG

Fastening material

Injection technology MIT-EA 380 ml and anchor rods M8x120 A2 and Sleeve MSH, steel brush, bellows



Renovation Schänzli, MuttENZ - MIT-EA

Customer	Batigroup AG
Construction description	Renovation Schänzli, MuttENZ
Construction management	Buser und Mitarbeiter, architects Gruner AG, Basel, engineers
Fastening material	Injection technology MIT-EA 380 ml and facade safety bolts



Development highway A5, Solothurn - HL-B

Customer

Canton SO

Construction description

Reconstruction of a bridge

Construction management

Construction enterprises Meier Jäggi + Spaltenstein

Fastening material

Heavy Duty Anchor HL-B



2002

SNB - MIT

Customer

Construction description

Fastening material

SNB

Rail track renovation

Injection technology MIT 380 ml SF



Belchen tunnel- MIT

Customer

Canton SO/BL

Construction description

Tunnel renovation A1

Fastening material

Injection technology 380 ml EA



Aare Döker, Olten - MIT-E 380

Customer	Rothpletz, Lienhard + Cie AG, Aarau
Construction description	Under water application (sewage water)
Application reason	Buoyancy protection while concreting
Fastening material	MIT-E 380 ml Mungo Injection technology EA



National route A5 - MNA

Customer	Construction department canton Solothurn
Construction description	Fixing of sound insulation wall
Project management	Office for national routes, Solothurn
Construction management	Frey AG, Zuchwil
Fastening material	Hammer Screws MNAr stainless steel



SIS Olten - m3

Customer

Construction description

Construction management

Fastening material

SIS SEGAINTERSETTLE AG

Fire Fighting

Novisol AG, Rheinfelden

Throughbolts m3



Coop Switzerland, Wangen - m3

Customer

Coop Schweiz

Construction description

Assembly of conveying systems

General enterprise

Gilgen Fördersysteme AG, Brislach

Fabrication & Assembly Taurus-Technik AG, Brislach

Fastening material

Throughbolt m3



F O M - Spreitenbach - MSD

Customer	SUVA
Construction description	Fastening Facades subconstructions
Construction management	Fahrni AG, Lyss
Fastening material	Throughbolts stainless steel MSDr



Schwarzwald bridge, Basel - m3

Customer

Canton Baselstadt

Construction description

Dismantling auxiliary bridge

Construction management

Tozzo Tiefbau AG, Bubendorf

Fastening material

Throughbolt m3



2002

National route A5 - MIT

Customer

Construction department canton Solothurn

Construction description

Fixing of veterinary fences

Project management

Office for national routes, Solothurn

Construction management

Lüthy & Co. , Subingen

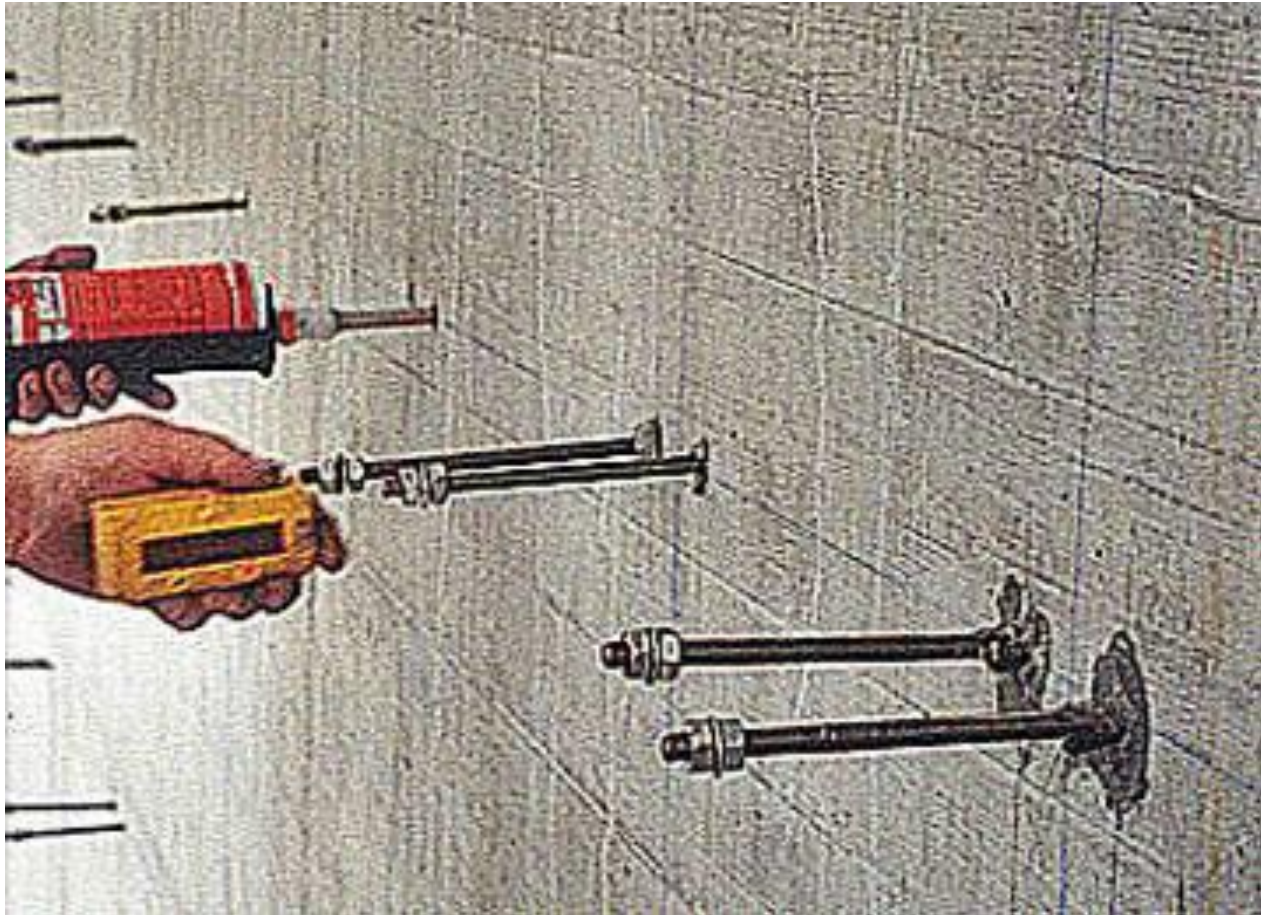
Fastening material

Injection technology MIT 380 ml EA, Anchor rod stainless steel A4



Schubiger AG, St. Gallen - MIT

Customer	Schubiger AG, St. Gallen
Construction description	Non-bearing natural stone facade
Construction management	Unibau AG, Mörschwil
Fastening material	Injection technology 380 ml EA



Noise protection wall railtrack 3 - MIT-E 380

Customer	Sersa AG, Burgdorf
Construction description	Noise protection wall railtrack 3, Ostermundigen – Gümligen
Construction management	Sersa AG, Burgdorf
Fastening material	MIT-E 380 ml Injection technology epoxy-acrylate



2002

Wankdorf stadium, Bern - MIT-EA 825ml

Customer

Bauherrschaft Wankdorf, Wankdorf AG

Construction description

Rebar fixing for concrete bearings for tribunes

Stress on tension, Depth of anchoring 950 mm

Construction management

Marazzi AG, Langnau

Fastening material

Injection technology MIT-EA 825 ml



St. Jakob, Basel - MIT

Customer

Canton BS

Construction description

Reconstruction of a bridge

Construction management

Construction enterprise Hydrojet / Marti AG

Fastening material

Injection technology MIT 380 ml EA



Volta place Basel - MIT

Customer

Canton, construction department

Construction description

Canal renovation Nordtangente St. Johann

Construction management

Gruner AG / Construction enterprise Hydrojet AG

Fastening material

Injection technology MIT 380 ml EA



Unique Zurich Airport - MIT

Customer

Unique Zurich Airport

Construction description

Building Doc Miedfield
(Taxiway / parking spaces)

Fastening material

Injection technology MIT 825 ml



Highway BAB A6 - MIT

Customer

Rheinland-Pfalz

Construction description

Road extension

Construction management

Otto Alte Teigeler

Fastening material

Injection technology

